

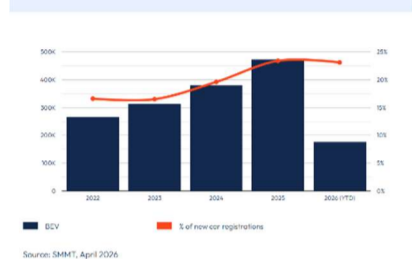
Electric Vehicles: Cleaner, Cheaper, Quieter

Electric Vehicles (EVs) produce no CO, NOx, VOCs or particles, are ULEZ compliant, smoother and quieter to drive. With no gears they have easy, instant power and no clunky gear changes. EVs cost less to drive and maintain than petrol or diesel cars.

With home charging, and nearly 120,000 public chargers in the UK, owning an EV is easier than ever. Last year almost 25% of new registrations in the UK were EVs.



Annual UK electric car registrations and market share



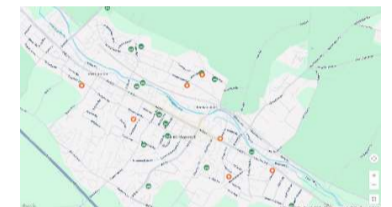
Home Charging: Your car charges while you are doing other things at home, and domestic electricity is cheaper than public chargers. Some energy suppliers offer cheaper rate for overnight charging overnight too. A typical home charger will add around 30 miles of range per hour.



No driveway? Herts County Council are trialling cross pavement channel style charging.

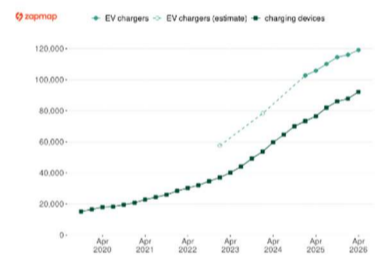


There are EV charger sharing schemes where driveway owners rent out their charger to other users. Co-Charger <https://co-charger.com/> and JustPark <https://www.justpark.com/ev/justcharge> both offer this service



Workplace charging is increasingly offered by employers.

Public charging: If you routinely charge at home, you will rarely need a public charger since the average UK driver covers fewer than 40 miles a day.



On longer trips, you may need to top up to reach your destination. A typical top up takes less time than the break you should take every couple of hours. Recent years have seen a massive jump in public chargers across the UK. Time for full charges vary by device and can be anything between 30 minutes to several hours, but most commonly you will only need to top up to reach your charging base.

Range

Real-world range on EVs are increasing all the time, and can now be as far as a typical fossil fuel driven car. Just like traditional cars, how far you get depends on your driving style, speed and weather conditions. Winter range is noticeably less than summer due to cabin heating and lower battery performance in cold weather. Always check real-world estimates from an independent source such as the EV Database before buying your EV.

<https://ev-database.org/>

More Info?

Check out the following website / You Tube channels for the latest news and advice:

EVM : <https://www.youtube.com/@ElectricVehicleMan>

Electrifying: <https://www.youtube.com/@Electrifyingcom>

Fully Charged: <https://www.youtube.com/@fullychargedshow>

Carwow: <https://www.carwow.co.uk/> AutoTrader <https://www.autotrader.co.uk/>

